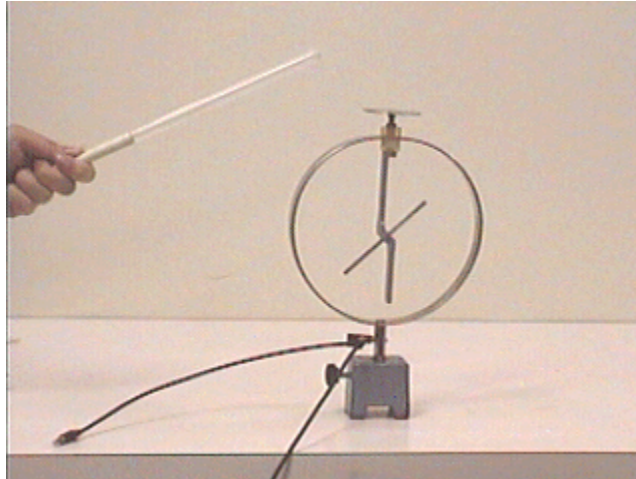


## Answer #128

The answer is (a): the reading will indicate a greater voltage or a greater charge, as seen in an mpeg video by clicking your mouse on the photograph below.



When a positively charged rod is brought close to the terminal, it pulls additional electrons out of the electroscopie toward the terminal, rendering a greater positive charge on the electroscopie, as seen.

---

[Archive 7](#)

[Question of the Week](#)

[Outreach Index Page](#)

[Lecture-Demonstration Home Page](#)



For questions and comments regarding the *Question of the Week* contact [Dr. Richard E. Berg](#) by e-mail or using phone number or regular mail address given on the [Lecture-Demonstration Home Page](#).