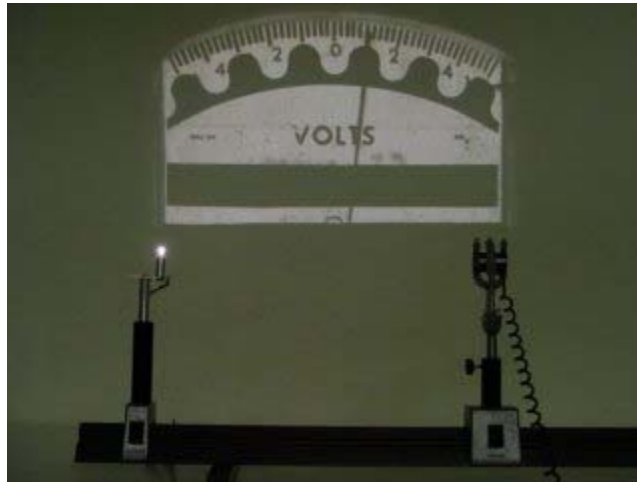
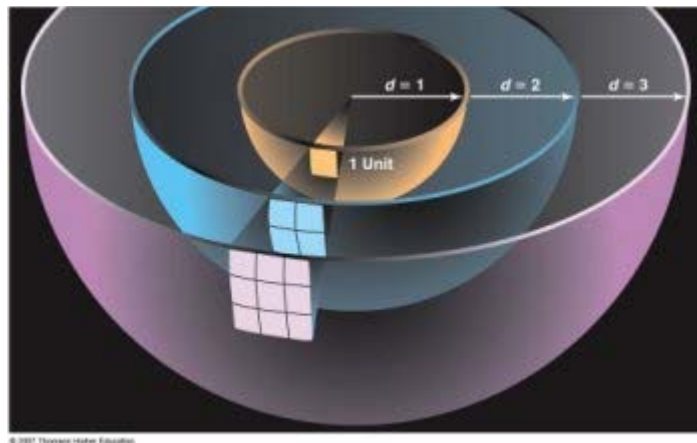


Answer #316



The answer is (c), as seen in the photograph above.

This is an example of the *inverse square law* which states that the intensity of radiation from a point decreases as one over the square of the distance from the source. This can be visualized by imagining a series of concentric spheres, as seen below. A sphere of twice the radius has four times the surface area, therefore it will have one-fourth the unit flux.



[Question of the Week](#)

[Outreach Index Page](#)

[Lecture-Demonstration Home Page](#)



For questions and comments regarding the *Question of the Week* contact [Dr. Richard E. Berg](#) by e-mail or using phone number or regular mail address

given on the [Lecture-Demonstration Home Page](#).