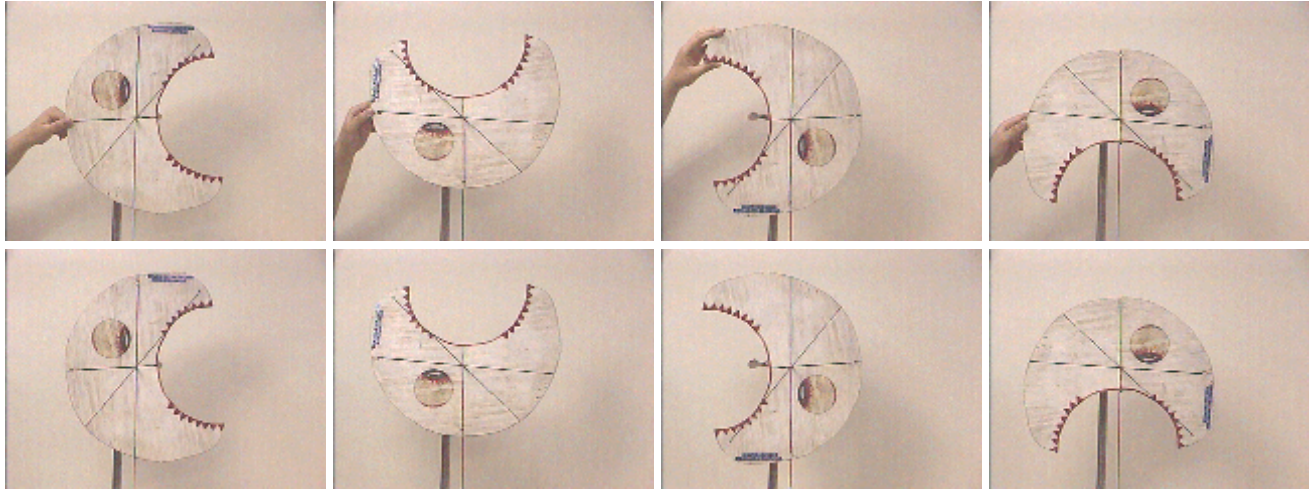


## Answer #96

The answer is (d): none of the positions will change when Gwen releases them. The position will be stable when any object is supported at its center of mass, as seen by comparing the pictures below where Gwen is holding the disc section with those where she is not.



---

[Archive 5](#)

[Question of the Week](#)

[Outreach Index Page](#)

[Lecture-Demonstration Home Page](#)



For questions and comments regarding the *Question of the Week* contact [Dr. Richard E. Berg](#) by e-mail or using phone number or regular mail address given on the [Lecture-Demonstration Home Page](#).