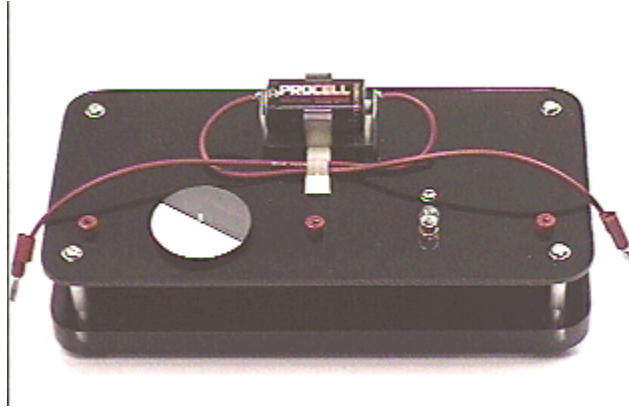


## Question #120

In [Question #37](#) we looked at a series circuit containing a motor and a light bulb. Review this question and answer as an introduction to the present question. A picture of the apparatus is shown below.



Now suppose that you connect both the motor and the light bulb in series across the battery, but *hold* the motor so that it cannot move.

What will happen:

- (a) Both the motor and the light bulb will operate.
- (b) Only the motor will operate.
- (c) Only the light bulb will operate.
- (d) Neither the motor nor the light bulb will operate.

Click here for [Answer #120](#) after September 16, 2002.

---

[Question of the Week](#)

[Outreach Index Page](#)

[Lecture-Demonstration Home Page](#)



For questions and comments regarding the *Question of the Week* contact [Dr. Richard E. Berg](#) by e-mail or using phone number or regular mail address given on the [Lecture-Demonstration Home Page](#).