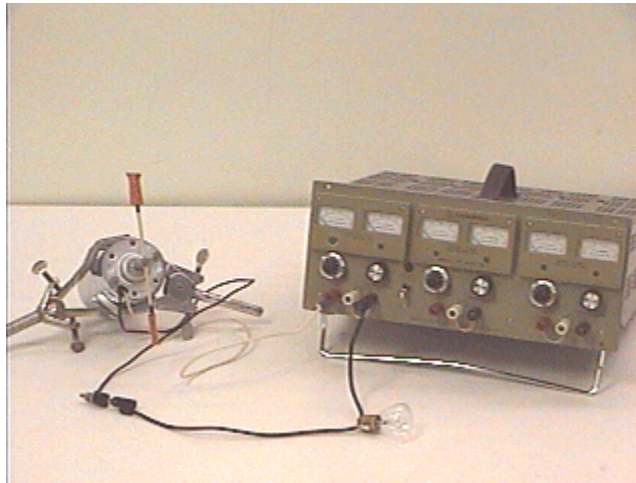


Question #196

This is a follow-up to [Question #37](#), that investigated a series circuit containing a 1.5 volt battery, a 1.5 volt light bulb, and a 1.5 volt dc motor.

We will repeat the experiment, only this time we use a 7.5 volt power supply with an appropriate light bulb and larger motor. Click your mouse [here](#) to see the light bulb alone placed across the power supply and [here](#) to see the motor alone with the power supply.



As before, the question is what will happen to the light bulb when the motor and the light bulb are operated in series across the power supply.

- (a) Both the motor and the light bulb will operate.
- (b) Only the motor will operate.
- (c) Only the light bulb will operate.
- (d) Neither the motor nor the light bulb will operate.

Click here for [Answer #196](#) after November 1, 2004.

[Question of the Week](#)

[Outreach Index Page](#)

[Lecture-Demonstration Home Page](#)



For questions and comments regarding the *Question of the Week* contact [Dr. Richard E. Berg](#) by e-mail or using phone number or regular mail address given on the [Lecture-Demonstration Home Page](#).