

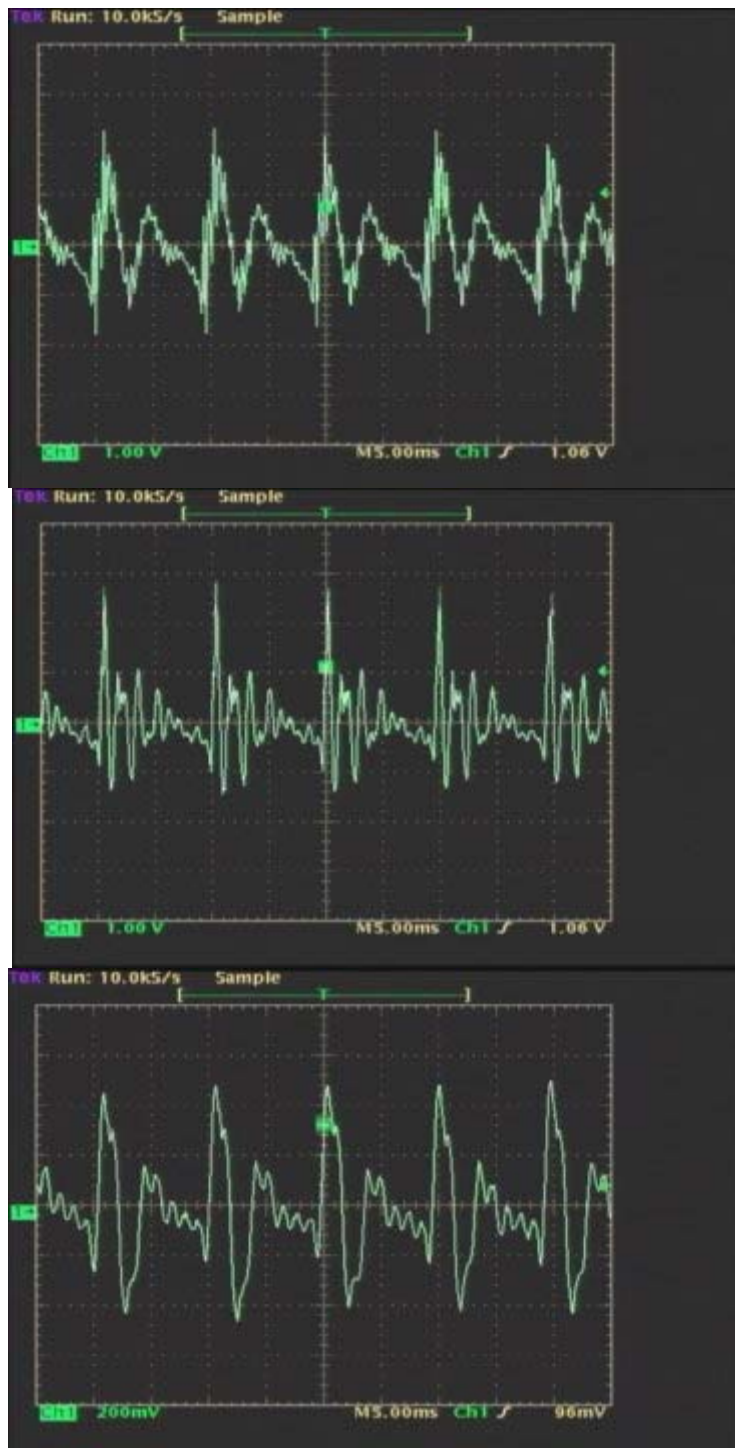
Question #327

This is a follow-up to [Question # 325](#) and [Question # 326](#) that will extend the concepts involved to include the human voice.

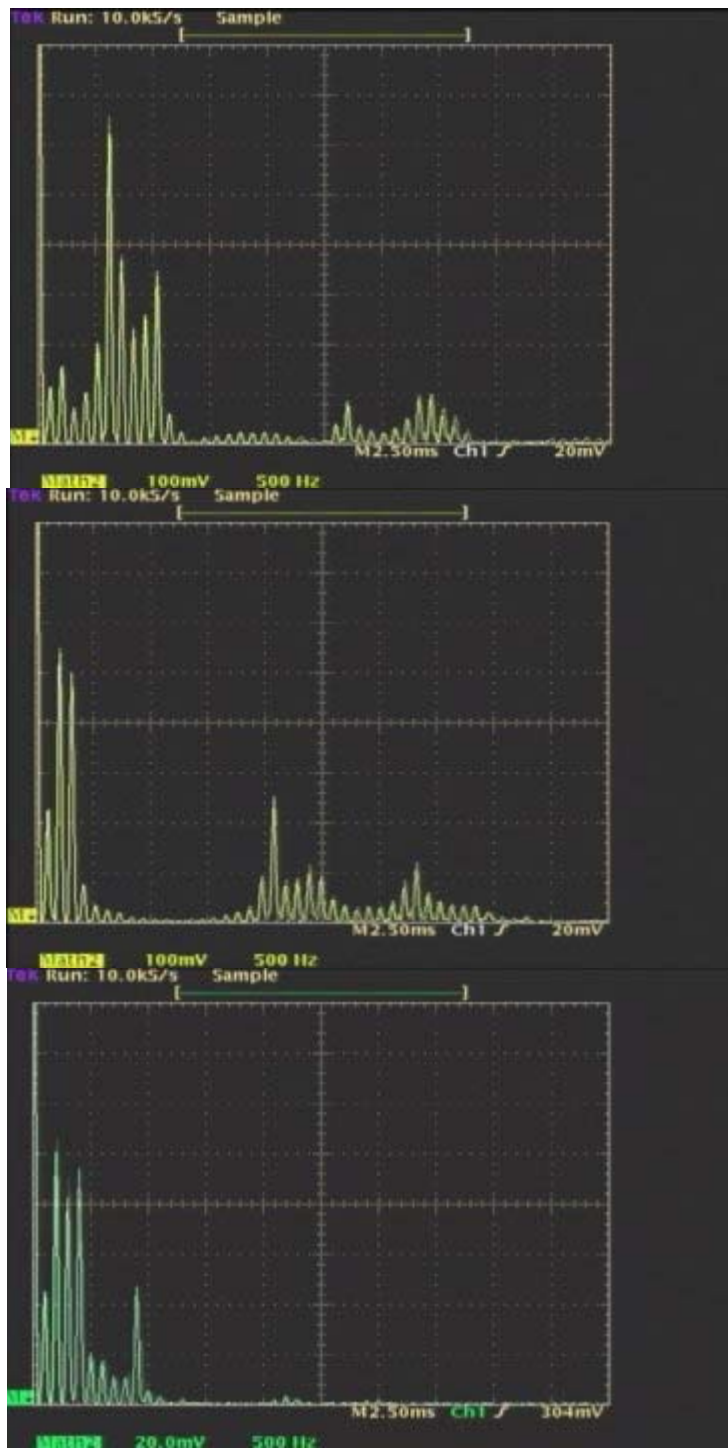
[ōō - ah - ēē](#)

Click on the sound symbols above to hear a male voice singing the vowel sounds "oo," "ah," and "ee" at a frequency of about 100 Hertz. The question for this week is to match the photographs wave shapes and spectra below with the sounds that you heard in the video.

Wave shapes (left to right) #1, #2, and #3:



Spectra (left to right) #1, #2, and #3:



Match one of the three waveforms and one the three spectra shown above with each of the sounds:

- (a) sound "oo"
- (b) sound "ah"
- (c) sound "ee"

It may be appropriate to make a simple table, as in earlier questions.

Click here for [Answer #327](#) after November 10, 2008.

[Question of the Week](#)

[Outreach Index Page](#)

[Lecture-Demonstration Home Page](#)



For questions and comments regarding the *Question of the Week* contact [Dr. Richard E. Berg](#) by e-mail or using phone number or regular mail address given on the [Lecture-Demonstration Home Page](#).