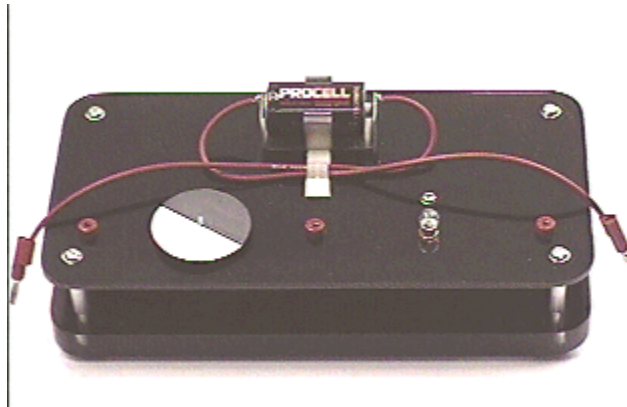


## Question #37

A 1.5 volt battery can be used to run a DC motor or to turn on a light bulb, as will be seen on an mpeg video by clicking on the photograph below.



Now suppose that the battery is connected to the motor and the light bulb as a series circuit.

What will happen when the motor and the light bulb are connected in series across the battery?

- (a) Both the motor and the light bulb will operate.
- (b) Only the motor will operate.
- (c) Only the light bulb will operate.
- (d) Neither the motor nor the light bulb will operate.

Click here for [Answer #37](#) after November 6, 2000.

---

[Question of the Week](#)

[Outreach Index Page](#)

[Lecture-Demonstration Home Page](#)



For questions and comments regarding the *Question of the Week* contact [Dr. Richard E. Berg](#) by e-mail or using phone number or regular mail address given on the [Lecture-Demonstration Home Page](#).