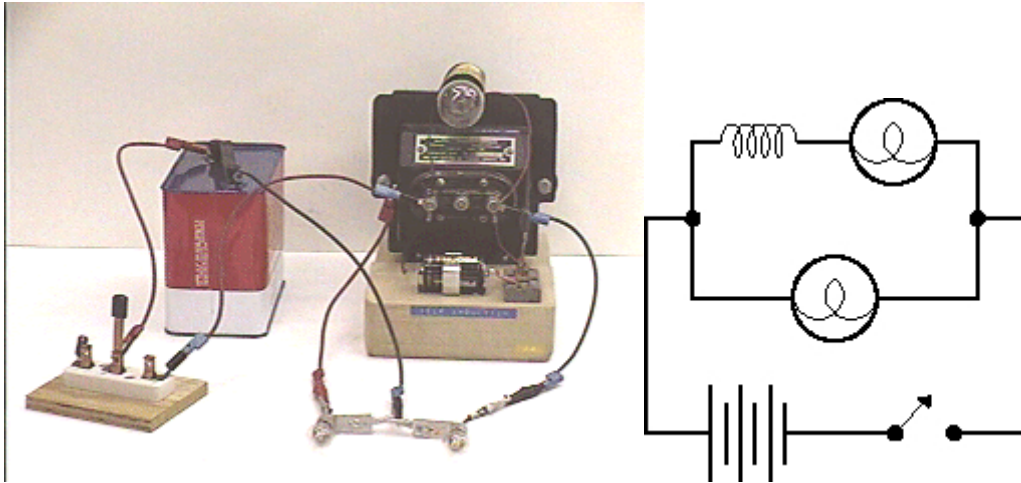


## Question #91

In [the previous question](#) we determined that lighting of a lamp is delayed by an inductor in series with the lamp, seen by clicking your mouse on the photograph below. This week the question is what happens when the switch in the circuit is turned off after being on for a time long enough for the bulbs to reach their steady state brightness.



Referring to the circuit drawing at the right, the switch will start in the closed position with both bulbs lit, and will then be turned off.

When the switch is opened:

- (a) both bulbs will go off immediately.
- (b) the bulb at the left will go off faster than the bulb at the right.
- (c) the bulb at the right will go off faster than the bulb at the left.
- (d) both bulbs will go off slowly but with the same timing.

Click here for [Answer #91](#) after November 19, 2001.

---

[Question of the Week](#)

[Outreach Index Page](#)

[Lecture-Demonstration Home Page](#)



For questions and comments regarding the *Question of the Week* contact [Dr. Richard E. Berg](#) by e-mail or using phone number or regular mail address given on the [Lecture-Demonstration Home Page](#).