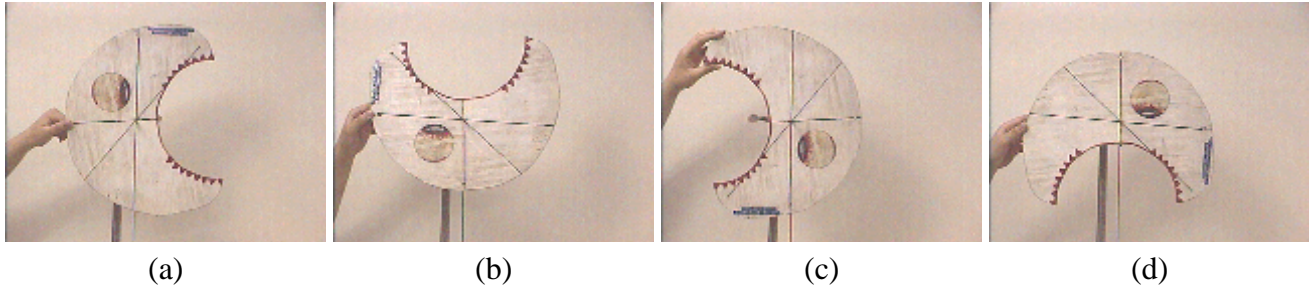


Question #96

A funny-shaped piece of plywood is suspended *at its center of mass and* held in place in four positions by Gwen, as seen in the photographs below. The center of mass is at the point where the three lines on the figure intersect. (Note that the horizontal line in each figure appears dashed due to the way the photograph is digitized.)



The question this week is what will happen in each of these situations when Gwen releases the figure. In particular, which ones will move when they are released?

When Gwen releases the figure from the various positions shown:

- (a) Position (a) will change.
- (b) Position (b) will change.
- (c) Position (c) will change.
- (d) Position (d) will change.
- (d) None of them will change position.

Click here for [Answer #96](#) after December 24, 2001.

[Question of the Week](#)

[Outreach Index Page](#)

[Lecture-Demonstration Home Page](#)



For questions and comments regarding the *Question of the Week* contact [Dr. Richard E. Berg](#) by e-mail or using phone number or regular mail address given on the [Lecture-Demonstration Home Page](#).